

Accelerator Space Available @ Sirti

office • lab • manufacturing



SIRTI ON RIVERPOINT BOULEVARD



SIRTI TECHNOLOGY CENTER

The Added Benefit of Incubator Services

Sirti provides business acceleration services to companies throughout the Inland Northwest. We also provide a physical business incubation environment where entrepreneurs and start-up companies can flourish

For information,
contact **Tim Williams**
at **509-358-2000**
or **www.sirti.org**

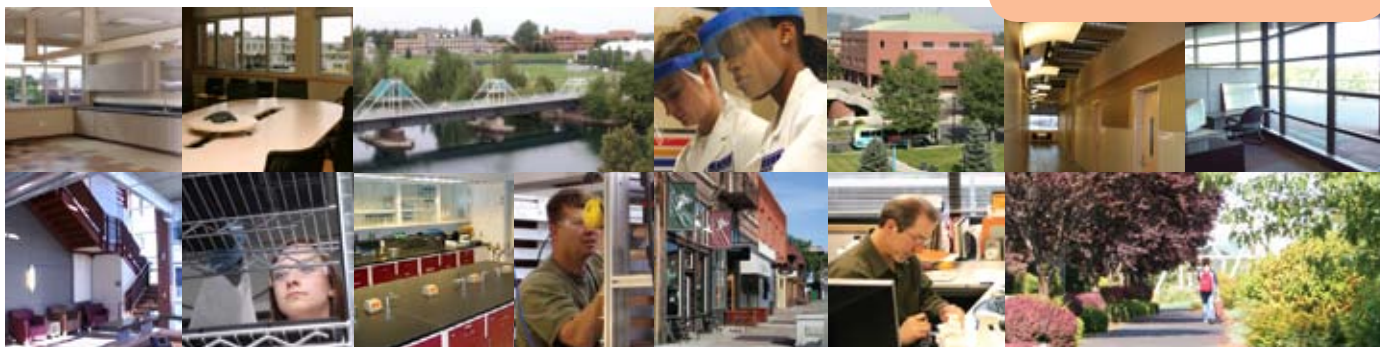
and high-growth companies can focus on their efficient growth.

We offer some of the most sought-after business amenities in the region, with competitive short-term leases on flexible, office, laboratory and light manufacturing

space. Our buildings—Sirti on Riverpoint Boulevard and the Sirti Technology Center—are near the Spokane River in The University District and Innovation Partnership Zone, and within easy walking distance of downtown Spokane.

Locate Your Technology Business @ Sirti

- Easy access to Sirti Client Accelerator Services
- Flexible leases -- flexible space
- Prime University District location
- Leading-edge IT environment
- Office, laboratory and manufacturing space
- Easy On-Off I-90
- 24-hour security with extensive parking



Locate Your Technology Business @ Sirti

Sirti is a Washington State economic development agency focused on accelerating the development and growth of technology companies throughout the Inland Northwest. Many Sirti clients locate their start-up and high-growth companies in our business incubator, taking advantage of the ideal environment for company development and growth.

Due to the remarkable success many achieve, clients graduate from Sirti and relocate to expanded facilities to accommodate long-term growth. As clients graduate, space becomes available for other innovative companies. **To learn more, contact Tim Williams at 509-358-2000.**

Sirti Buildings feature these amenities

- Mix of office, laboratory, and manufacturing space
- Short-term, flexible leases available
- Space can be reconfigured to suit
- Prime University District locations
- Wet labs of various sizes and amenities
- Spokane River views and Centennial Trail access
- Bicycle storage plus locker and shower facilities
- Fully equipped meeting facilities—catering nearby
- Workrooms with copier/printer, shredding, recycling, appliances
- 24-hour security service
- Ample parking available
- High speed wireless internet and VOIP system available
- IT services available
- Shipping and receiving docks
- Backup power generation available
- 15 minutes from Spokane International Airport

Sirti Technology Center 120 N. Pine Street

The Sirti Technology Center is a mixed use facility that offers 28,000 square feet of wet labs, manufacturing and office space. Located within easy walking distance to downtown Spokane on the edge of the University District, the Center presents a contemporary business atmosphere with state-of-the-art IT infrastructure. The Sirti Technology Center has nearby access to the Spokane River and the region's extensive Centennial Trail system.



Sirti on Riverpoint Boulevard 665 N. Riverpoint Blvd.

Our Riverpoint facility comprises 12,000 square feet of space—office, labs, cleanrooms and light manufacturing. Located on the Spokane River with direct access to the Spokane River Centennial Trail, a non-motorized 37-mile paved pathway that follows the river, Sirti on Riverpoint is an exceptionally desirable business space at market rates. The University District is quickly and easily accessed from I-90, and just 15 minutes from Spokane International Airport.

